

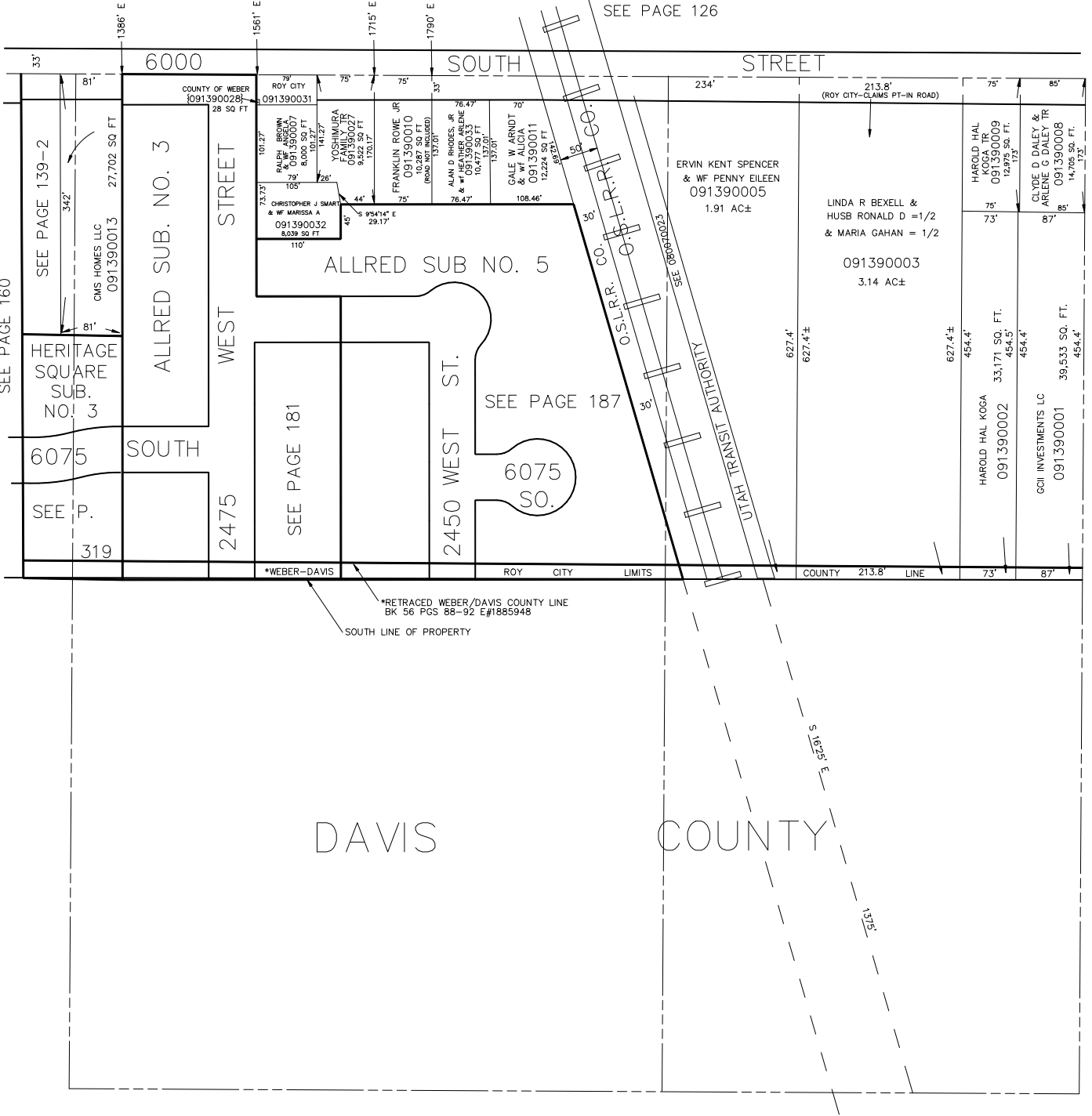
N.E. 1/4 OF THE S.W. 1/4
SECTION 23, T.5N., R.2W., S.L.B. & M.

IN ROY CITY

SCALE 1" = 100'

TAXING UNIT: 41

SEE PAGE 126



SEE PAGE 160

SEE PAGE 139-2

HERITAGE SQUARE SUB. NO. 3

6075 SOUTH

SEE P. 319

ALLRED SUB. NO. 3

WEST STREET

2475

SEE PAGE 181

2450 WEST ST.

SEE PAGE 187

6075 SO.

ALLRED SUB NO. 5

ERVIN KENT SPENCER & WIFE PENNY EILEEN 091390005 1.91 AC±

LINDA R BEXELL & HUSB RONALD D = 1/2 & MARIA GAHAN = 1/2 091390003 3.14 AC±

HAROLD HAL KOGA TR 091390009 12.875 SQ. FT.

627.4'±

HAROLD HAL KOGA 091390002 33,171 SQ. FT.

CLOYDE D DALEY & ARLENE G DALEY TR 091390008 14,705 SQ. FT.

627.4'±

CCII INVESTMENTS LC 091390001 39,533 SQ. FT.

*WEBER-DAVIS

ROY CITY LIMITS

COUNTY 213.8' LINE

73'

87'

*RETRACED WEBER/DAVIS COUNTY LINE BK 56 PGS 88-92 E#1885948

SOUTH LINE OF PROPERTY

DAVIS

COUNTY

SEE PAGE 129